



CobraNet Manager



The CobraNet Manager software shows you a real-time overview and control of all of your connected CobraNet equipment that is in use. A built-in scheduler is used to plan your connections in time.

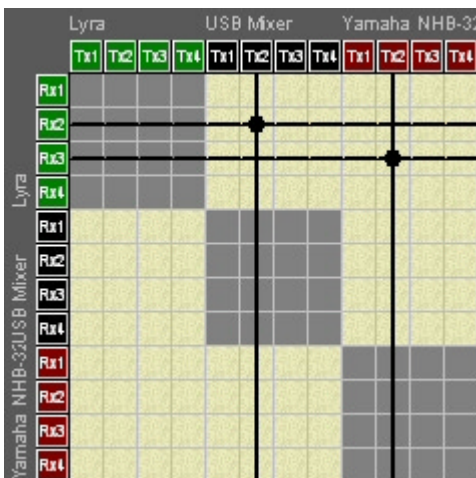
We know you wish to define your own functionality in your network design. We created the possibility to program your own macro functions! By using the D&R MCU unit these can be assigned to LCD-keys. Also Plug-ins can be written for the manager. This gives the manager the possibility to control non-standard CobraNet features. The Manager will show you a complete device-rack on screen for all known devices!

If you already use CobraNet you need to test-drive this software! From that moment your motto is 'What you see is what you control'.

THE MATRIX

This is the most important part in the main screen of the CobraNet Manager software. You get a direct overview of all CobraNet devices connected to your local area network (LAN).

If you are familiar with CobraNet you know each device has 4 receive sockets and 4 transmit sockets. In the matrix you will find these sockets as separated connection points.



The CobraNet bundle numbers are automatically assigned to the devices if you click on a cross-point. This assignment is done over the network itself with SNMP (Simple Network Management Protocol) messages. Each device which complies to the 'CobraNet standard' has SNMP implemented.

By a right mouse click you get several detailed options for a cross-point/connection.

- ✓ Adding in the Scheduler
- ✓ Adding in Macro
- ✓ Make Multicast
- ✓ Make Private
- ✓ Make Unicast
- ✓ Make Secure

Finally your audio network can be managed like you always dreamed of.

SCHEDULER EVENTS LIST

In the image below you see a list of events, here you can see all upcoming events. You have the possibility to add, delete and change your events.

ID	Start Date	Start Time	Name	URL/IP	OID	Data type	Data	Comments
1	8/31/2004	13:31:55				Macro	Show Alert	
2	4/5/2005	13:29:10	USB Mixer	10.100.100.27	1.3.6.1.4.1.2800.1.1.6.1.1.2.2	Integer	Free bundle	USB Mixer c
3	11/29/2006	13:31:04	Lyra	10.100.100.25	1.3.6.1.4.1.2800.1.1.7.1.1.2.2	Integer	Free bundle	Lyra
4	10/22/2007	13:24:42	Yamaha NHB-33	10.100.100.23	1.3.6.1.4.1.2800.1.1.5.1.1.2.2	Integer	Free bundle	Yamaha NHB-33
			USB Mixer	10.100.100.27	1.3.6.1.4.1.2800.1.1.7.1.1.2.2	Integer	Free bundle	USB Mixer

In the scheduler you can add three different event types:

- ✓ SNMP Events
- ✓ Cross-Point Events
- ✓ Macro Events

ADDING SNMP EVENTS

A dialog box shows how you can add a SNMP Events. Because network data like IP (Internet Protocol), SNMP are not easy readable you can simply select the settings from a template.



Templates are available for:

- ✓ IP Addresses/'Write Community' (Devices)
- ✓ SNMP Object Identifier' (SNMP Template)
- ✓ SNMP Data' (Data Template)

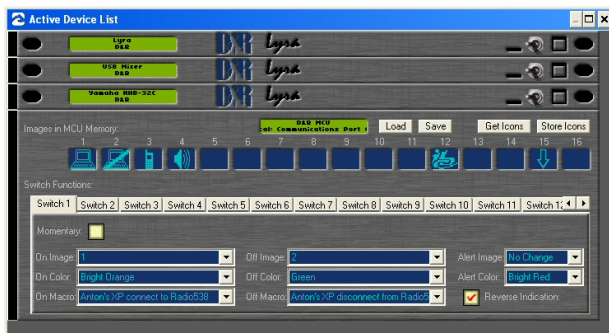
To remember why you would like to plan this SNMP Event you can add a description to your event.

PLUG-IN RACK

Equipment may be controlled via the network if SNMP control is available. When the CobraNet manager detects a known device, it will show the plug-in. All devices are shown in a device rack, you see a screenshot of a device rack below. Here you see 4 devices, 3 Lyra's and one MCU (Macro Control Unit). In this way you can control every parameter published by the designers of the devices.

Currently available plug-ins are for the following devices:

- ✓ D&R Lyra (4 fader digital console/matrix).
- ✓ D&R MCU (assignable graphic macro keys).
- ✓ Rane NM84 (Mic / Line Preamplifier).
- ✓ Rane NM48 (Line Preamplifier, 4x8).
- ✓ Crown PIP (IQ-PIP-USPx/CN).
- ✓ We will implement new plug ins when requested by OEM's.



MACRO LIST

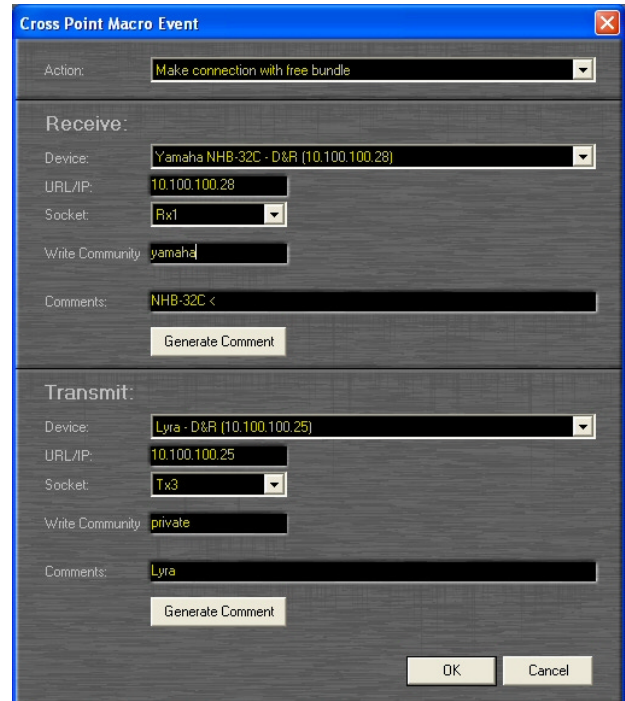
You are able to define your own macro functions. Those functions can be triggered from the scheduler and/or from any plug-in. Of course you can test your macro by a click on the Execute button in the 'Macro List Box'. All Macros are saved on your hard disk and can easily be changed/updated.

MACRO EVENT LIST

Each macro can hold one or more events. In the 'Macro Event List' you can add, delete and change your events. You have three types of events which you can add:

- ✓ SNMP Events
- ✓ Cross-Point Events
- ✓ Plug-in Functions

When a Macro is triggered, the events are activated and sent to different devices/plug-ins. The next section shows an example dialog box for adding a cross-point event.



REQUIREMENTS

- ✓ Two or more CobraNet Devices.
- ✓ A CobraNet certified switch.
- ✓ A PC running Windows NT 4.0 SP6a, Windows 2000 or Windows XP.
- ✓ At least one network card available.
- ✓ 512 Mb of Ram.
- ✓ CD-Rom Driver
- ✓ Screen resolution of at least 1024x768
- ✓ No network skills required.

Of course its handy to know about 'network topology', 'IP theory' and the 'SNMP protocol'.

Free download of demo version available on www.cobranetmanager.com